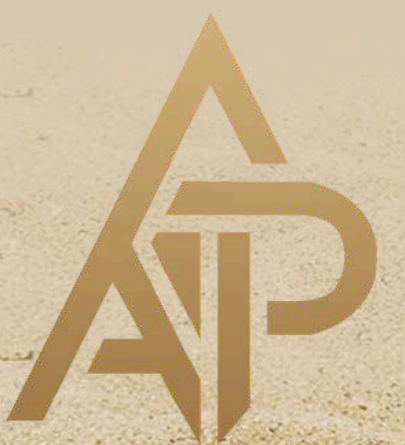




ABDELIZA *Paradise*

REDEFINING COASTAL LUXURY





DISCOVER MORE

Abdeliza Paradise Apartments is an exclusive residential development in the heart of Nyali, Mombasa. Designed for modern families and discerning investors. Our project blends luxury, comfort, and convenience with the charm of coastal living.

Soaring gracefully over nine levels, we present an exclusive collection of only 52 premium residences — a design choice that guarantees privacy, exclusivity, and a true sense of community. Each home is meticulously crafted with refined finishes, generous layouts, and access to an array of world-class amenities.

BECAUSE WHERE YOU LIVE SHOULD REFLECT WHO YOU ARE

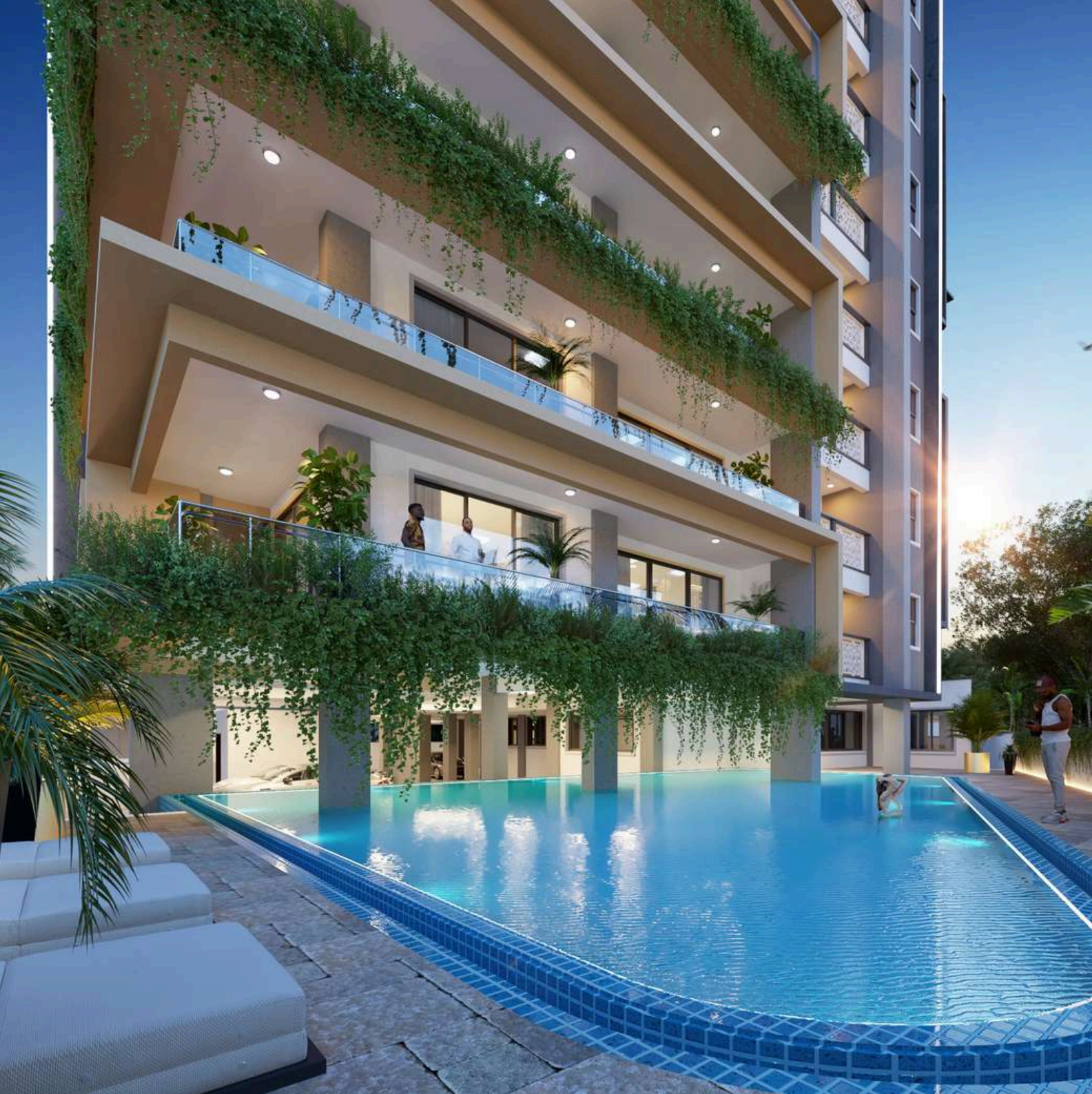
The coast is a place of slow, intentional living — a rhythm that embraces peace, relaxation, and balance. Abdeliza Paradise Apartments offers residents a serene escape where every detail is designed to complement the calm and beauty of seaside living.





FOR THOSE WHO DESIRE MORE THAN A HOME – A LIFESTYLE

Living at Abdeliza Paradise Apartments means enjoying the ease and convenience of a perfectly connected location. Just a short walk from the sandy shores of Nyali Beach, you can relax by the ocean whenever you like. Shopping is easy with City Mall and Nyali Centre nearby, offering everything from stores and dining to entertainment. The apartments are also well connected by road, with hospitals, schools, and other key services close by — giving you a lifestyle where everything you need is within easy reach.



INVEST IN ELEGANCE

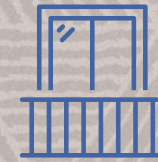
This property is designed with relaxation and leisure in mind, offering residents a variety of recreation areas to enjoy. From the sparkling swimming pool that invites you to unwind, to the lush landscaped gardens that provide a serene escape amidst nature, every detail has been crafted to enhance your lifestyle.

RESTFUL LIVING SPACES





AMENITIES



Large balconies with sea views



Swimming pool



landscaped gardens



Gym



Ample Parking



24-hour security with CCTV & access control



Internet connectivity



Direct access to the beach



Full backup generator

This beachfront property offers stunning ocean views, golden sunrises, and peaceful sunsets, all set against the calming rhythm of the waves — a perfect blend of beauty and serenity. Nyali is renowned for its pristine beaches, vibrant shopping centers, fine dining, and proximity to top schools and healthcare facilities, making it an ideal place to live or invest



SLEEK KITCHEN



RESTFUL SPACES

A serene living room designed for comfort and relaxation, with soft lighting, cozy furnishings, and a calm palette that creates the perfect space to unwind



RESTFUL ESCAPE



ENDLESS VIEWS

Overlooking Nyali and the vast Ocean, it offers residents panoramic views that stretch from sunrise to sunset. Designed as a versatile space for both relaxation and social gatherings.



CLEAN DESIGN



Investment Value Why choose Abdeliza Paradise?

- Flexible payment plans (**up to 36 months**) to make ownership attainable
- **Full legal compliance** under the Sectional Properties Act 2020
- Backed by a strong developer, trusted legal advisors, and reliable banking partners

20% Initial
Deposit

UNIT A



2 BED Unit
Area : 1,485 Sq.ft

- 1.Cloak room
- 2.Living Room
- 3.Balcony
- 4.Bedroom 01
- 5.Lounge
- 06.Bedroom 06
- 07.Balcony
- 08.MasterBedroom
- 09.Master Bathroom
- 10.Laundry
- 11.Kitchen

UNIT B

3 BED Unit
Area : 2,314 Sq.ft



- 1.Master Bathroom
- 2.Master Bedroom
- 3.Balcony
- 4.Laundry
- 5.Kitchen
- 06.Dining
- 07.Living Room
- 08.Balcony
- 09.Bedroom 01
- Balcony
- 10.Bedroom 01
- 11.Dresser
- 12.Bedroom 01
- Bathroom

UNIT C



3 BED +DSQ Unit
Area : 1,657 Sq.ft

- 1.Cloak room
- 2.Master Bathroom
- 3.Dresser
- 4.Master Bedroom
- 5.Balcony
- 06.Balcony
- 07.Living room
- 08.Dining
- 09.Bedroom 01
- 10. Balcony
- 11.DSQ Bathroom
- 12.Balcony
- 13.Bedroom 02
- 14.Bedroom 02 Bath
- 15.Laundry
- 16.Kitchen

UNIT D

3 BED + DSQ Unit
Area : 2,615 Sq.ft



- 1.Cloak room
- 2.Dining
- 3.Lounge
- 4.Balcony
- 5.Master Balcony
- 06.Master Bedroom
- 07.Master Bathroom
- 08.Balcony
- 09.Bedroom 01
- 10.Bedroom 01 Bath
- 11.Balcony
- 12.Bedroom 02
- 13.Bedroom 02 Bath
- 14.Laundry
- 15.Kitchen
- 16.DSQ
- 17.DSQ Bath

UNIT E



3 BED +DSQ Unit
Area : 2,615 Sq.ft.

- 1.Cloak room
- 2.Dining
- 3.Lounge
- 4.Balcony
- 5.Balcony
- 06.Master Bedroom
- 07.Master bathroom
- 08.Balcony
- 09.Bedroom 02
- 10. Bathroom
- 11.Balcony
- 12.Bedroom 03
- 13.Bathroom
- 14.Utility
- 15.Kitchen
- 16.DSQ
- 17.DSQ Bathroom

UNIT F

3 BED + DSQ Unit
Area: 2,626 sq.ft.



- 1.Cloak room
- 2.Dining
- 3.Lounge
- 4.Balcony
- 5.Balcony
- 06.Master Bedroom
- 07.Master bathroom
- 08.Balcony
- 09.Bedroom 02
- 10. Bathroom
- 11.Balcony
- 12.Bedroom 03
- 13.Bathroom
- 14.Utility
- 15.Kitchen
- 16.DSQ
- 17.DSQ Bathroom



SOPHISTICATED AND SERENE

This property offers uninterrupted views of the ocean, where the horizon meets the sky in a stunning display. Each day begins with golden sunrises that flood the rooms with warmth and ends with serene sunsets painting the waters in vibrant hues. The gentle rhythm of the waves creates a soothing backdrop, while panoramic views of the beach and turquoise waters invite a lifestyle of peace, leisure, and timeless beauty.



STARTING
PRICE
90,000 USD

FLEXIBLE OPTIONS:

INITIAL DEPOSIT:20%

BALANCE PAYABLE ACROSS 24 MONTHS

CONSTRUCTION TIMELINE

BANK FINANCING AVAILABLE

FOR MORE DETAILS :

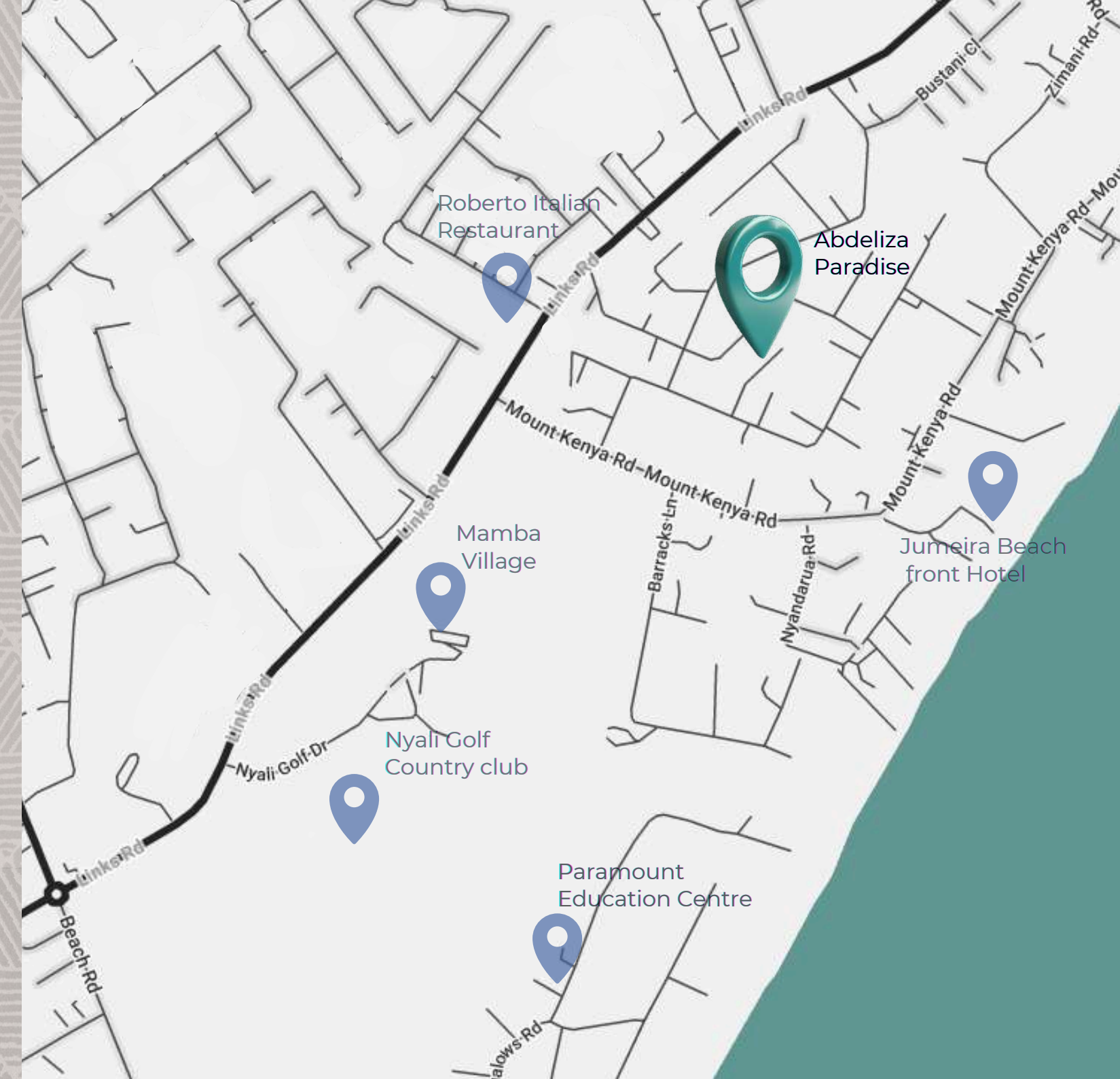
+254 759 453 381

+254 715 717 774



LOCATION

Located in prime region in Nyali. Just 5 minutes from the pristine Nyali Beach and only 3 minutes from City Mall, everything you need is within easy reach. Healthcare is also close by, with Aga Khan Hospital just 7 minutes away. The development is surrounded by top international schools, fine dining restaurants, and vibrant entertainment options, making it the ideal address for both families and investors.



ABDELIZA *Paradise*

DEVELOPER

BUCKEYE COASTAL CONSTRUCTION
LIMITED

LEGAL COUNSEL

SWALEH AND CO. ADVOCATES

BANKING PARTNER



premier bank



Kenya: +254 759 453 381 +254 715 717 774

USA: +1 (614) 665-5032



Email: info@abdeliza.com | buckeye@nyali.com



Website: www.abdeliza.com

REDIFINING COASTAL LUXURY

